

Red Deer Construction Association Past Presidents

1957-2017



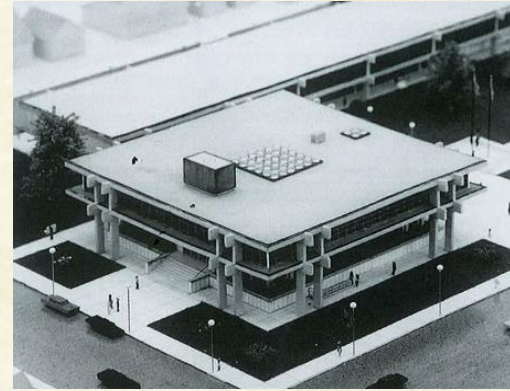
1957-1964



Arne Ahlstron

Throughout 1959 - 1960,
development began on
Kin Canyon.

1959-1960



Louis Victor

Oriole Park School a one storey elementary
was originally built in 1964

1963-1964

1957-1958

The Horton Water
Spheroid was built in
1957 by the Horton
Steel Co. It took 240
tonnes of steel and cost
\$275,000 to build.

Bill Eastwood



1961-1962

More than any other urban
centre in central Alberta, Red
Deer blossomed in the post-war
era, earning the title of the
fastest growing city in Canada.
With a pre-war population of
4042, its population increased to
19,612 by 1961

Dalt Skinner



1965-1972



Walt Abbot

A new one-story library was built to celebrate Canada's Centennial in 1967, which is the main floor of the adult portion of today's Downtown Branch.

1967-1968



Stan Stimson

Enrolment rises at Red Deer College to 831 students. Extensive facility additions are opened and the new Art and Design program is launched.

1971-1972

1965-1966

On Feb. 1, 1966, Red Deer was officially declared the fourth largest city in Alberta

George Turner



1969-1970

Constructed in 1970, Parkland Mall was the city's first regional shopping centre. Originally anchored by Safeway and Woolco, it was home to 23 stores and gave area residents the opportunity for one-stop shopping.

Syd Ellis



1973-1979



Steve Sawula

In July 1976, work began on the massive Alberta Gas Ethylene plant on a 150-acre site just south of Joffre. With a projected cost of \$375 million, it was easily the largest construction project ever commenced in Central Alberta.

1975-1976



Adolf Greib

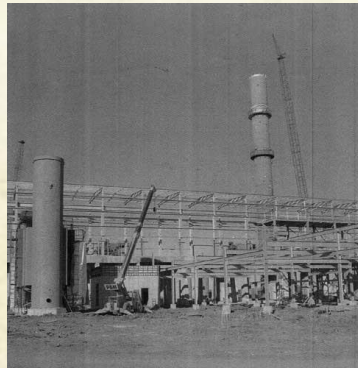
The biggest construction project launched in Red Deer in 1978 was the regional hospital, which cost \$57 million after three years of work.

1979

1973-1974

Architect's model a major redevelopment plan for downtown Red Deer. The proposed hotel and shopping centre, west of City Hall, were never built as economic growth slowed and some local firms closed shop.

Malcolm Hough



1977-1978

The amount of new construction in Red Deer in 1978 was truly staggering. For the first time in history, the value of building permits issued by the City of Red Deer broke the \$100 million mark. It was up dramatically from the amount recorded the year before.

Frank Avery



1980-1983



Ulrich Wunsch

Red Deer experiences yet another boom of staggering proportion its population jumping from about 30,000 in 1975 to more than 46,000 in 1981

1981



Lorenz Elberg

Enrolment stands at 2,065. Red Deer College decides to pursue a 'comprehensive' core mission. Apprenticeship and Technology wings and new residential housing opens in 1983.

1983

1980

Building activity soared to nearly 140 million dollars a year, with new manufacturing plants, office towers, shopping malls, and hotels going up constantly.

Jim Reid



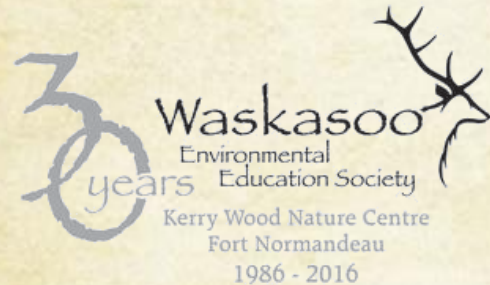
1982

1982 - 1983 saw \$130,000.00 donated to the Westerner for creation of Pioneer Park, \$49,500.00 to a new building for the Boy Scouts at Camp Woods and \$5,000.00 for a Paraplegic lift at the Recreation Centre pool.

John Cousins



1984-1988



Dick Lodewyk

The Canadian Pacific Railroad Station is historically important as the sole remaining structure of the city's extensive railway landscape. It played an important role in the settlement and subsequent growth of Red Deer as an agricultural distribution centre from its construction in 1910 to its closure in 1985.

1985



Jim Burke

Province ponies up \$21 million for Centrium in 1988

1987-1988

1984

On July 12, 1984, Waskasoo Park was officially opened stretching more than 12 kilometres from Fort Normandeau and the Old Timers Picnic Grounds in the west to the large river bend and flats northeast of the city.

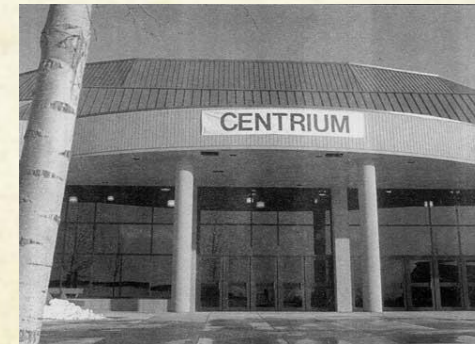
W.B. (Bill) Fox



1986

Between 1985 and 1986, the Red Deer Kinsmen teamed up with the Bower Place Community Association. As a result of their hard work, Bower-Kin Place was created on June 14th, 1986 to encourage people in the neighbourhood to socialize.

Denis Leyden



1989-1992



Herman Bruin

On June 28, 1990, Her Majesty The Queen arrived at the Red Deer Industrial Airport and was chauffeured to the Red Deer Regional Hospital Centre where she opened the new state of the art pediatrics ward.

1990



Kari Tiitannen

In 1992, the Red Deer Rebels hockey team started and has become one of the most popular and successful sports franchises in Red Deer's history.

1992

1989

In 1989, after winning their eighth league championship, the Rustlers were expelled from the league for violating its by-laws. The team remained suspended until 1992 when it officially folded, making room for the Red Deer Rebels, as the city finally joined the WHL.

• **Ben Meyer**



1991

In November 1990, almost 100 years to the day after the railroad first reached Red Deer, the Canadian Pacific Railway began moving its tracks to a new location on the west side of the city. Union workers donated labour and materials to help turn the old CPR bridge into a pedestrian corridor in 1991.

Fausto Grande



1993-1996



Ralph Ward

Habitat for Humanity Red Deer Region Society was founded in 1994 and has since built 29 homes and continues to increase this number annually.

1994

1995 World Junior
HOCKEY
Championship



Bruce Cook

The Red Deer Curling Club brings world wide recognition to the City of Red Deer by hosting the 1996 World Junior curling championships, in March of 1996.

1996

1993

In 1993 \$200,000.00 was committed over 5 years toward the Kinsmen Library Link. The Kinsmen Link joined the existing city library building and the old firehall

Art Quiding



Habitat
for Humanity®
Red Deer

The 1995 World Junior Ice Hockey Championships were the 19th edition of the WJHC and were hosted in Red Deer with games held throughout central Alberta. The host Canadians won their third straight gold medal, and their eighth overall.

Floyd Hansen

1995



60
YEARS

1997-2000



Don Lang

Early in 1998, a preliminary group of individual Central Albertans came together to form the Central Alberta Regional Trails Initiative.

1998



Terry Greter

On Oct. 11, 2000, the Nova Chemical/Union Carbide E-3 ethylene plant at Joffre and the Union Carbide polyethylene plant at Prentiss were officially opened by Premier Ralph Klein.

2000

1997

The Alberta Sports Hall of Fame and Museum was incorporated as a charitable society February 26, 1997. Governed by a Board of Directors, the Hall of Fame and Museum Society continued to fundraise to build a new and permanent home in Red Deer.

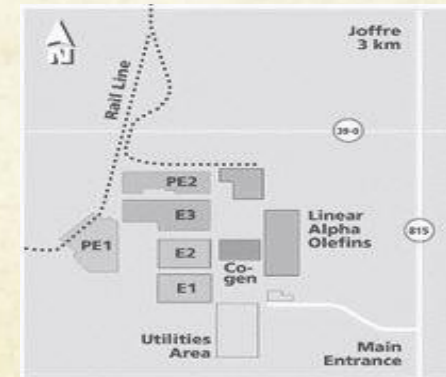
Domenico Mancuso



1999

Ownership of the airport was taken over on September 1, 1999 by the Red Deer Regional Airport Authority (RDRAA), which includes The City of Red Deer and Red Deer County as stakeholders.

Dick Smith



2001-2004



Dan Waters

In 2002 The extension of Highway #11 from Red Deer to Highway #21 to the east was complete and the first 3 km of Highway #11 west of Red Deer was twinned.

2002



Kim Stannard

Bower Mall underwent a \$55 million redevelopment that commenced in September 2004 and was completed in August 2009.

2004

2001

In 2001 Red Deer Welcomes the Opening of the Collicutt Center.

Steve Gooding



2003

On Wednesday, June 18, 2003, lightning struck the Michener Centre Administration Building, setting off a very serious fire. The beautiful four-storey, redbrick building, built in 1913 on the brow of the East Hill, was one of Red Deer's grandest old landmarks.

Bill Lalonde



2005-2008



Garth Stange

Red Deer hosts 2006 Summer Games!

2006

*50
Years!*

Scott Glass

Construction begins on Executive Place! A 12-storey mixed-use building featuring office, medical and retail space in downtown Red Deer

2008

2005

The \$16 million Construction began in the spring of 2005 on the 13 kilometres worth of new eastbound lanes from Highway 11's junction with Highway 596 near Red Deer to its junction with Highway 20 at Sylvan Lake.

• Iris Steinley



2007

2007 Marks the 50th Anniversary of the Red Deer Construction Association!

Paul Beaumont



60
YEARS

2009-2012



Sean Penn

Red Deer SPCA opens 12,300-square-foot centre, over four times larger, with double the capacity for pets. As many as 120 cats and 30 to 35 dogs each day can be cared for in the \$4.2 million building.

2010



Josh Edwards

The ENMAX Centrium Expands!
The expansion includes 14 more luxury suites and an additional 1,000 seats added to the 6,000 seat facility.

2012

2009

Completed in Spring 2009, the Red Deer Civic Yards relocation project involved the relocation and amalgamation of the City of Red Deer infrastructure services.

Wayne Gustafson



2011

Red Deer opens a new \$23 million, 80,000 square foot RCMP Building. More than three years in the planning and construction, the station is a major upgrade for the 160 officers and civilians who worked in cramped quarters on 48th Avenue and 49th Street.

Clayton Dexter



2013-2016



Chris Stephan

The newest branch of Red Deer Public Library, the Timberlands Branch, opened in September 2014.

2014



Kelly Slepicka

Construction of the Gary W. Harris Canada Games Centre. This \$88 million project celebrating health, wellness and sport will open in the fall of 2018.

2016

2013

Red Deer Celebrates 100 Years!

. Mike Ulyot



2015

A modern two-lane roundabout is opened at 67 St. and 30 Ave. A roundabout was chosen for this location for safety and operational advantages, and to support future growth in the city's northeast.

Jason Towers

